

TERRAPLANE

Rebuild by Andrew Benzie
andrew@andrewworld.com

for X-Plane v8.50

AB Air Version 1.0
October 2006

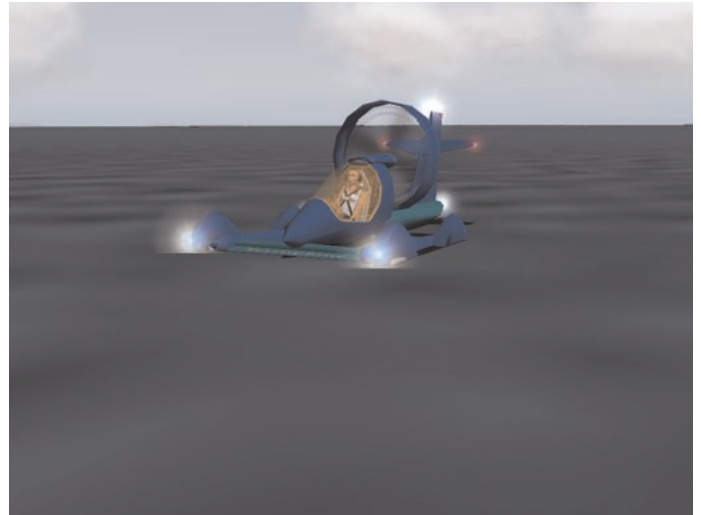
Please Note: This vehicle is an updated and/or modified version of another author's original work. Please refer to the original README file (located within the same directory as this file, if available) for more information. I have obtained the original author's permission whenever necessary. I would like to sincerely thank the original author(s) for providing me a solid foundation on which to build; without their work this release would not be possible. This guide is not to be misconstrued as a reference for real-world applications.

HISTORY

This is a rebuild of the excellent Terraplane by Christopher Coggon. Please see the ReadMe Original folder for more information.

The Terraplane is a lot of fun to drive, it works well on both land and water. The engine is electric, so you don't need to start the engines or worry about running out of fuel.

It is a light craft, the going upwind can be a challenge at times.



the terraplane in action



an animated steering wheel and sound effects enhance the sim boating experience

WHAT'S NEW

- new exterior paint job/lighting
- retooled engine
- new easier to read/operate custom cockpit with animated steering wheel
- other tweaks here and there

A flight yoke works great for the rudder. The brakes only work on land.

Comments are always appreciated:
andrew@andrewworld.com

REPAINTS/REDISTRIBUTION ACCEPTABLE ONLY IN ACCORDANCE WITH INCLUDED README FILES.

Please obtain my permission prior to posting any modifications to these files.